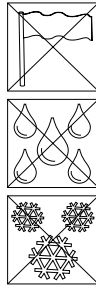
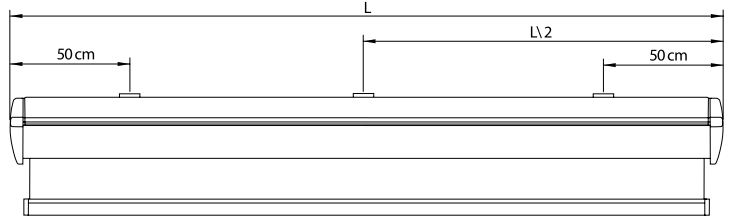
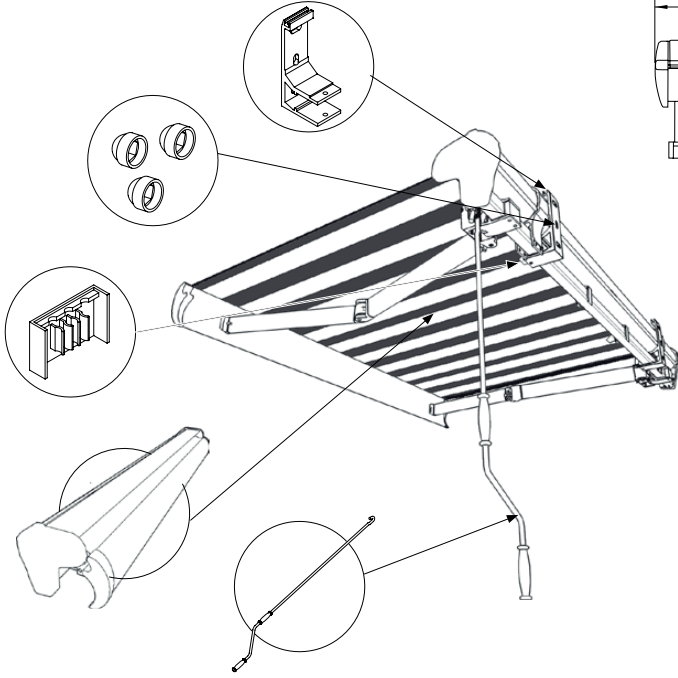
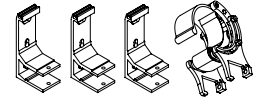


Notice de pose :
Store bannne sur mesure
Demi-coffre Lisboa

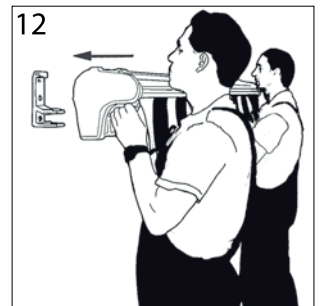
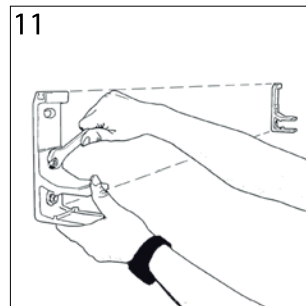
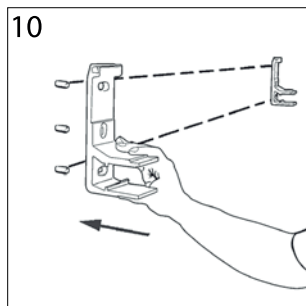
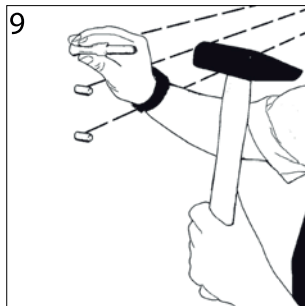
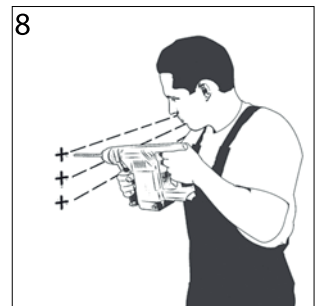
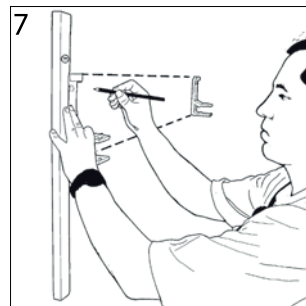
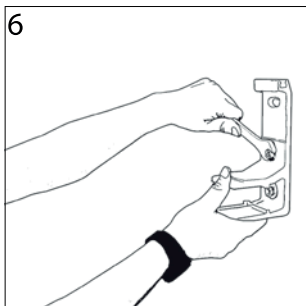
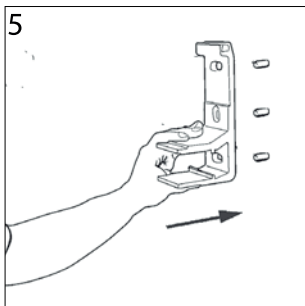
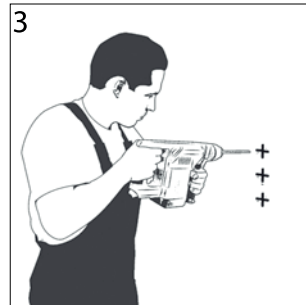
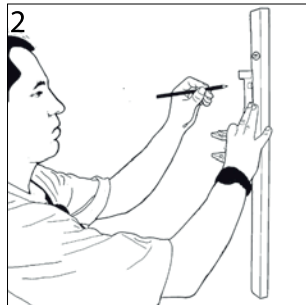
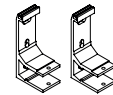
Nous vous conseillons d'être 2 

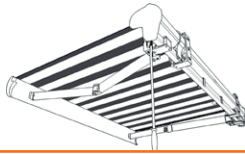


Largeur > 4m

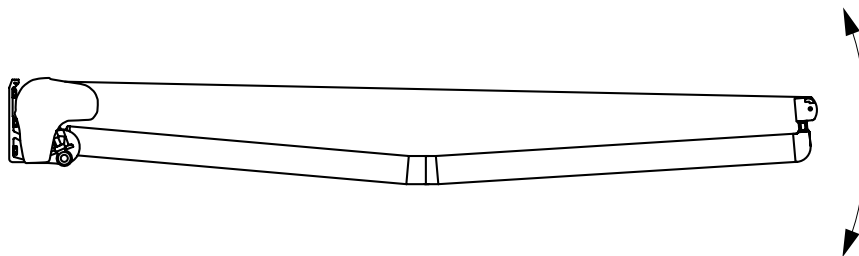
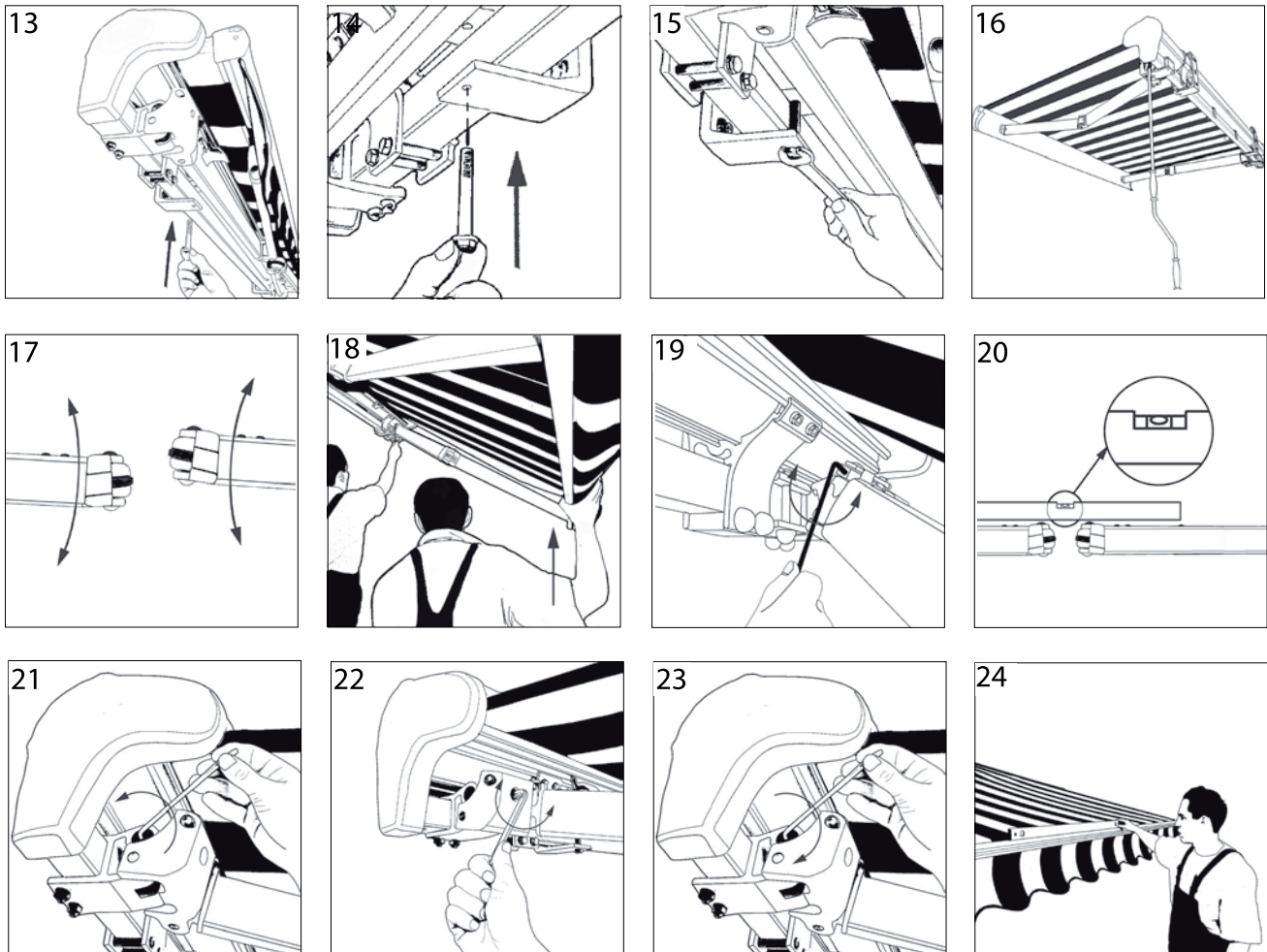


Largeur < 4m





Notice de pose : Store banne sur mesure Demi-coffre Lisboa



ATTENTION :

- N'installez pas votre store dans les endroits fortement exposés au vent et aux intempéries.
- Installez le store loin de toute source de chaleur ou de vibration.
- N'utilisez pas votre store les jours de pluie et / ou de vent.
- Si la toile de votre store à été mouillée, laissez la toile sécher avant de replier le store.

Échangez, gardez le contact...